



TOYOTA LC200 - SUPPLEMENT INSTRUCTIONS

FITTING INSTRUCTIONS FOR: *KAYMAR BAR - OCT 2022 ONWARDS*

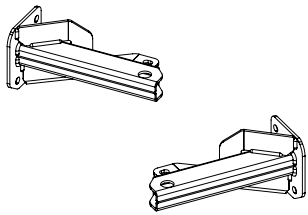
PLEASE NOTE:

**THIS IS AN AMENDMENT TO THE MAIN FITTING INSTRUCTIONS TO COVER A DESIGN CHANGE.
ANY STEPS NOT COVERED IN THIS AMENDMENT ARE AS PER CURRENT FITTING INSTRUCTIONS**



UPDATED COMPONENTS

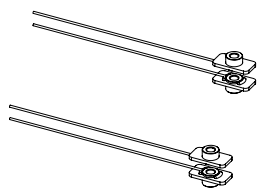
1 Updated Corner Bracket



L/H & R/H Design

x1

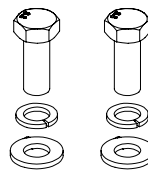
2 New Chassis Insert Nuts



2x Nuts Per Corner Bracket

x1

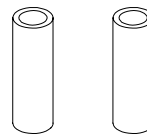
3 M14 x 35 Bolts & Washers



1x Set Per Corner Bracket

x1

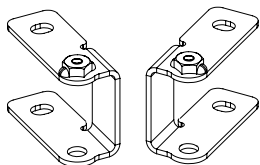
4 New 65mm Spacer Tube



1x Per Chassis Bracket

x1

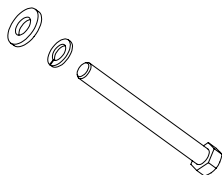
5 New Chassis Brackets



L/H & R/H Design

x1

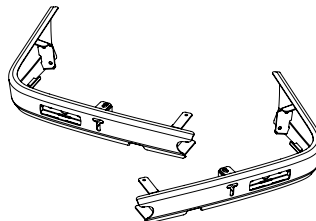
6 M12 x 110 Bolt & Washers



1x Set Per chassis Bracket

x10

7 Updated Rear Bar



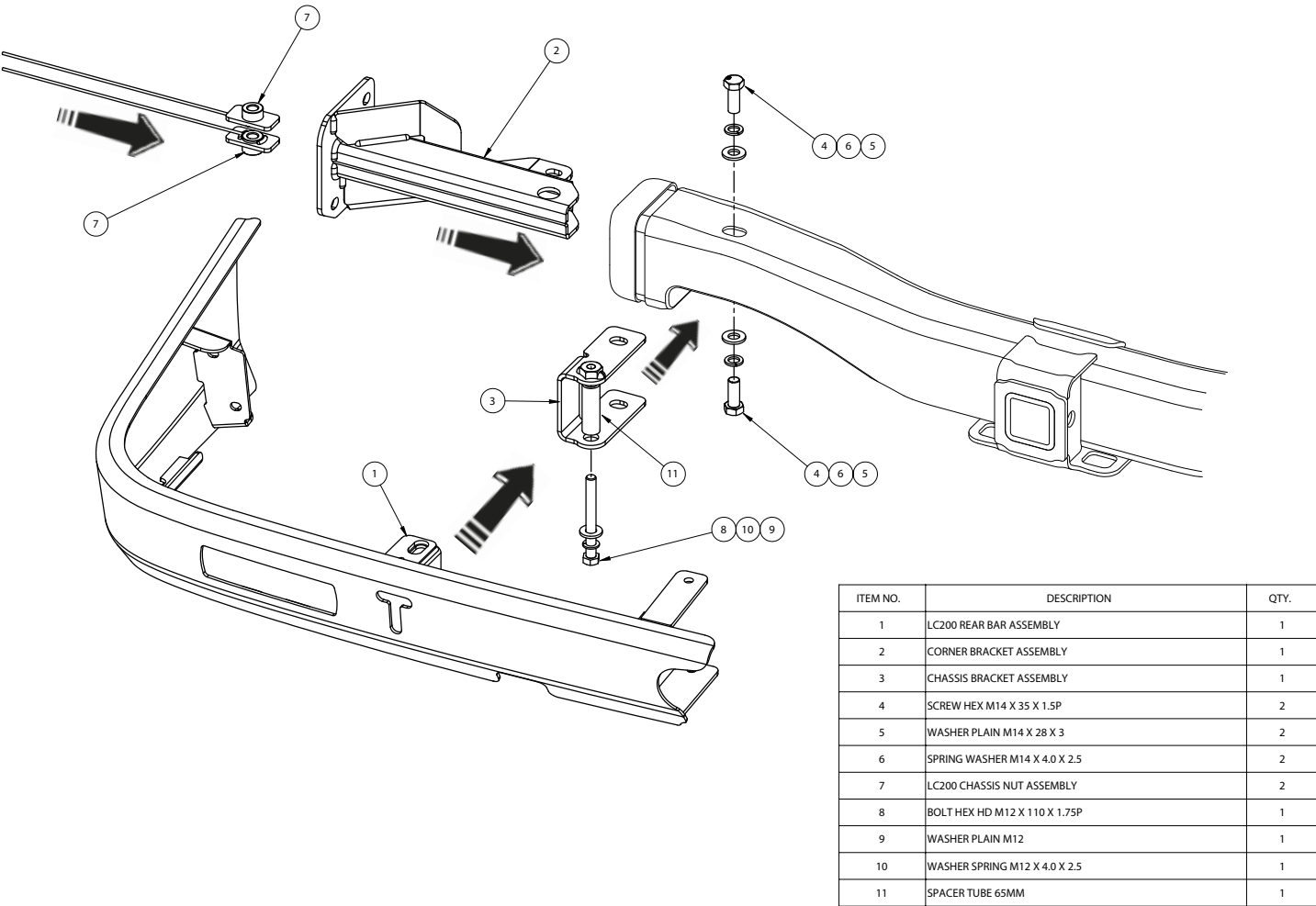
L/H & R/H Design

x1

REAR BAR & CARRIER DESIGN UPDATE



PLEASE NOTE:
THIS IS AN AMENDMENT TO THE MAIN FITTING INSTRUCTIONS TO COVER A DESIGN CHANGE.
ANY STEPS NOT COVERED IN THIS AMENDMENT ARE AS PER CURRENT FITTING INSTRUCTIONS



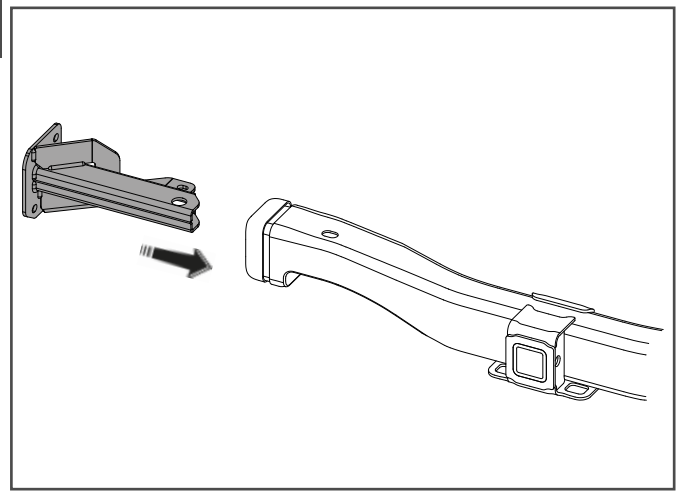
SPECIFIED TORQUE SETTINGS:
M12 - 80Nm
M14 - 140Nm

STEP 1

CARRIER CORNER BRACKET INSTALL:

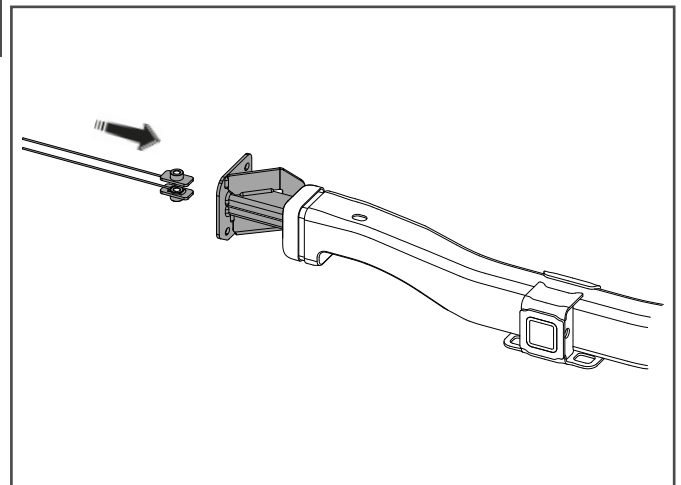
IF INSTALLING A REAR BAR ONLY, PROCEED DIRECTLY TO STEP 6

- INSERT THE CORNER BRACKET INTO THE OPENING ON THE OUTSIDE OF THE CHASSIS AS SHOWN



STEP 2

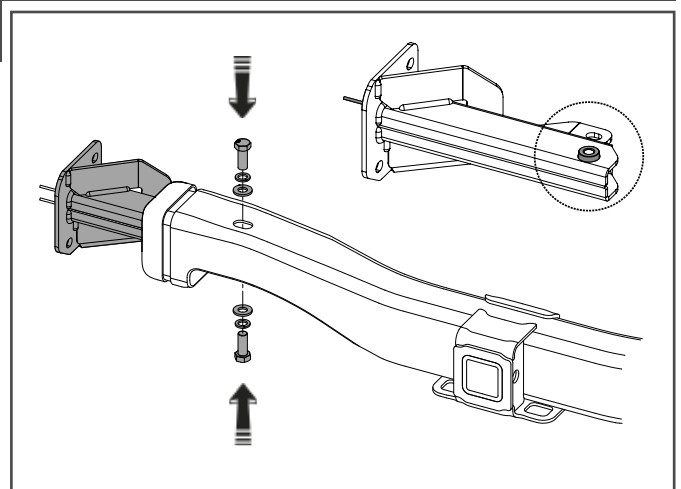
- INSERT 2x CHASSIS NUTS THROUGH THE OPENING IN THE SIDE OF THE CORNER BRACKET, ONE FACING UP AND ONE FACING DOWN.



STEP 3

IF INSTALLING A CARRIER WITH REAR BAR, PROCEED TO STEP 4

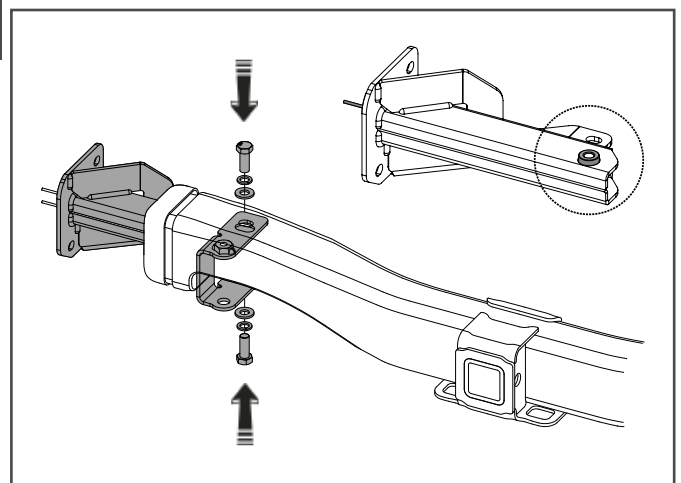
- WHEN INSTALLING A CARRIER ONLY ENSURE THAT THE BOSS ON THE CHASSIS NUTS ARE SITTING CORRECTLY IN THE HOLES ON THE CORNER BRACKET AS SHOWN IN THE SMALL IMAGE.
- ALIGN THE THREADED BOSS WITH THE HOLES IN THE CHASSIS ON THE TOP AND BOTTOM, THEN LOOSELY INSTALL THE 2x M14x35mm BOLTS, FLAT WASHERS & SPRING WASHERS AS SHOWN.
- GRADUALLY TIGHTEN BOTH BOLTS MAKING SURE THAT THE BRACKET PULLS UP EVENLY AND THE SIDE MOUNT IS SQUARE TO THE GROUND.
- CHECK THAT THE BRACKET HOLES UNDER THE SIDE OF THE CHASSIS ARE CORRECTLY ALIGNED AND INSERT THE BOLTS AS PER THE MAIN INSTRUCTIONS AND TIGHTEN ALL FASTENERS TO SPECIFIED TORQUE SETTINGS
- THE UPDATED CORNER BRACKET INSTALL IS NOW COMPLETE AND YOU CAN FINISH WITH THE MAIN INSTRUCTIONS.



STEP 4

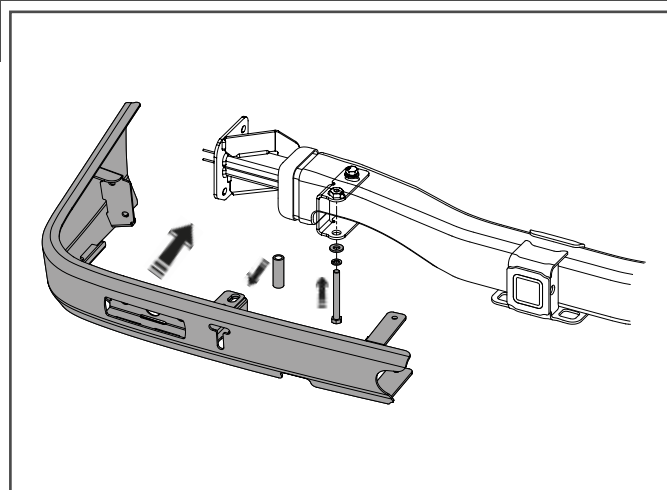
REAR BAR CHASSIS BRACKET INSTALL WITH CORNER BRACKET:

- WHEN INSTALLING A CARRIER WITH A REAR BAR SLIDE THE CHASSIS BRACKET OVER THE REAR OF THE CHASSIS AS SHOWN AND ALIGN WITH THE HOLES ON THE TOP AND BOTTOM OF THE REAR CROSS MEMBER.
- ENSURE THAT THE BOSS ON THE CHASSIS NUTS ARE SITTING CORRECTLY IN THE HOLES ON THE CORNER BRACKET AS SHOWN IN THE SMALL IMAGE.
- ALIGN THE THREADED BOSS WITH THE HOLES IN THE CHASSIS ON THE TOP AND BOTTOM, THEN LOOSELY INSTALL THE 2x M14x35mm BOLTS, FLAT WASHERS & SPRING WASHERS AS SHOWN.
- GRADUALLY TIGHTEN BOTH BOLTS MAKING SURE THAT THE BRACKET PULLS UP EVENLY AND THE SIDE MOUNT IS SQUARE TO THE GROUND AND THE BRACKET IS SQUARE TO THE CHASSIS.
- CHECK THAT THE BRACKET HOLES UNDER THE SIDE OF THE CHASSIS ARE CORRECTLY ALIGNED AND INSERT THE BOLTS AS PER THE MAIN INSTRUCTIONS AND TIGHTEN ALL FASTENERS TO SPECIFIED TORQUE SETTINGS



STEP 5

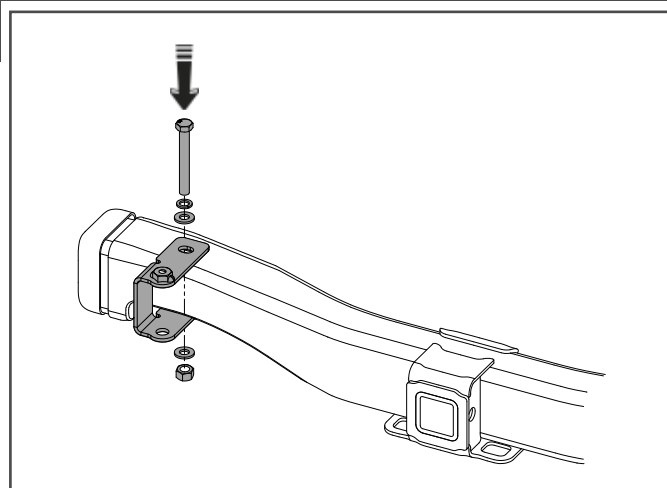
- ONCE THE CORNER BRACKET IS INSTALLED AND CHECKED FOR SQUARENESS OFFER THE REAR BAR UP TO THE CHASSIS AS SHOWN.
- ENSURE THAT THE SPACER TUBE IS FITTED INSIDE THE UPDATED BRACKET ON THE REAR BAR AND THEN LOOSELY INSTALL THE M12x110mm BOLT, FLAT WASHER AND SPRING WASHER AS SHOWN.
- THE UPDATED CORNER BRACKET WITH REAR BAR INSTALL IS NOW COMPLETE AND YOU CAN FINISH WITH THE MAIN INSTRUCTIONS.



STEP 6

REAR BAR ONLY INSTALL:

- WHEN INSTALLING A REAR BAR ONLY SLIDE THE CHASSIS BRACKET OVER THE REAR OF THE CHASSIS AS SHOWN AND ALIGN WITH THE HOLES ON THE TOP AND BOTTOM OF THE REAR CROSS MEMBER.
- INSTALL THE CHASSIS BRACKET USING THE ORIGINAL M14x110mm BOLT, FLAT WASHERS, SPRING WASHER AND NUT AS SHOWN.
- ENSURE THAT THE BRACKET IS SQUARE TO THE CHASSIS AND THEN TIGHTEN TO THE SPECIFIED TORQUE SETTINGS



STEP 7

- ONCE THE CHASSIS BRACKET IS INSTALLED AND CHECKED FOR SQUARENESS OFFER THE REAR BAR UP TO THE CHASSIS AS SHOWN.
- ENSURE THAT THE SPACER TUBE IS FITTED INSIDE THE UPDATED BRACKET ON THE REAR BAR AND THEN LOOSELY INSTALL THE M12x110mm BOLT, FLAT WASHER AND SPRING WASHER AS SHOWN.
- THE UPDATED REAR BAR ONLY INSTALL IS NOW COMPLETE AND YOU CAN FINISH WITH THE MAIN INSTRUCTIONS.

